



Schenectady City School District

Mosaic Associates Architects
Kersten Lorcher, AIA

20th of January, 2016



CAPITAL PROJECT UPDATE | Outline

- Group A Projects Status Update:
Keane ES, Paige ES, SCLA - *Complete*
- Group B Projects Status Update:
Mont Pleasant Middle School
Oneida Middle School
Pleasant Valley Elementary - *Complete*
- Group C Projects Status Update:
Central Park Middle School
Howe Elementary
Van Corlaer Elementary
- Group D Projects Status Update:
Hometown Health Center @ MPMS
Hometown Health Center @ SHS
*CPMS – Exterior Masonry Repair Project



- Next Steps:
Critical & Milestone Dates

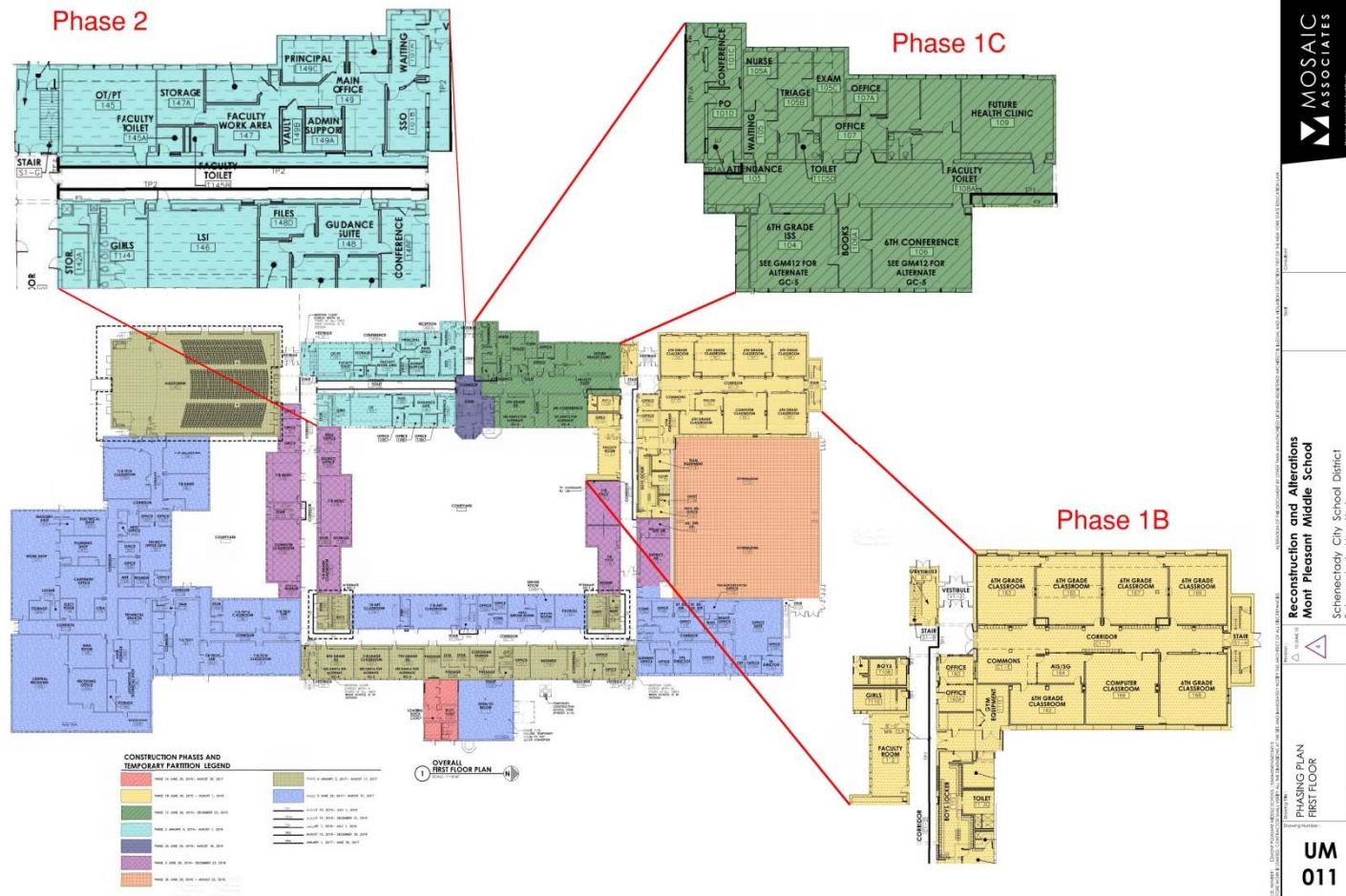


CAPITAL PROJECT | Group B

- MPMS – Phases 1B, 1C & 2

Any Updates?

*Remove/Adjust
Slide?*





PROGRESS UPDATE | MPMS

- MPMS – 3rd Floor



Phase 1C – Finished Classrooms



PROGRESS UPDATE | MPMS

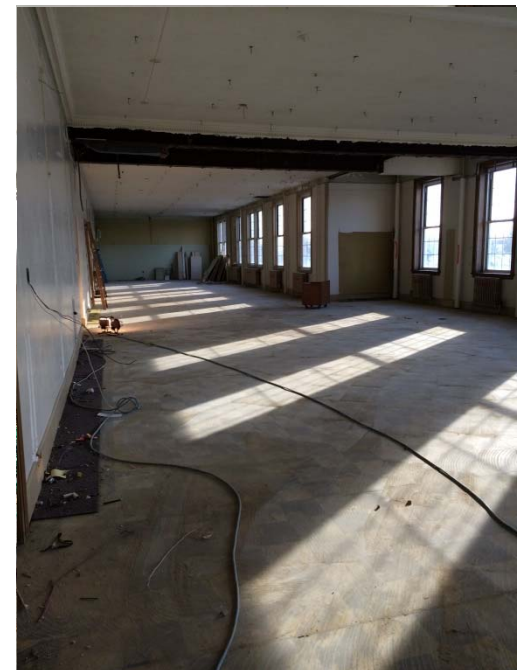


Phase 1B – Metal Stud Wall Construction



PROGRESS UPDATE | MPMS

Phase 2

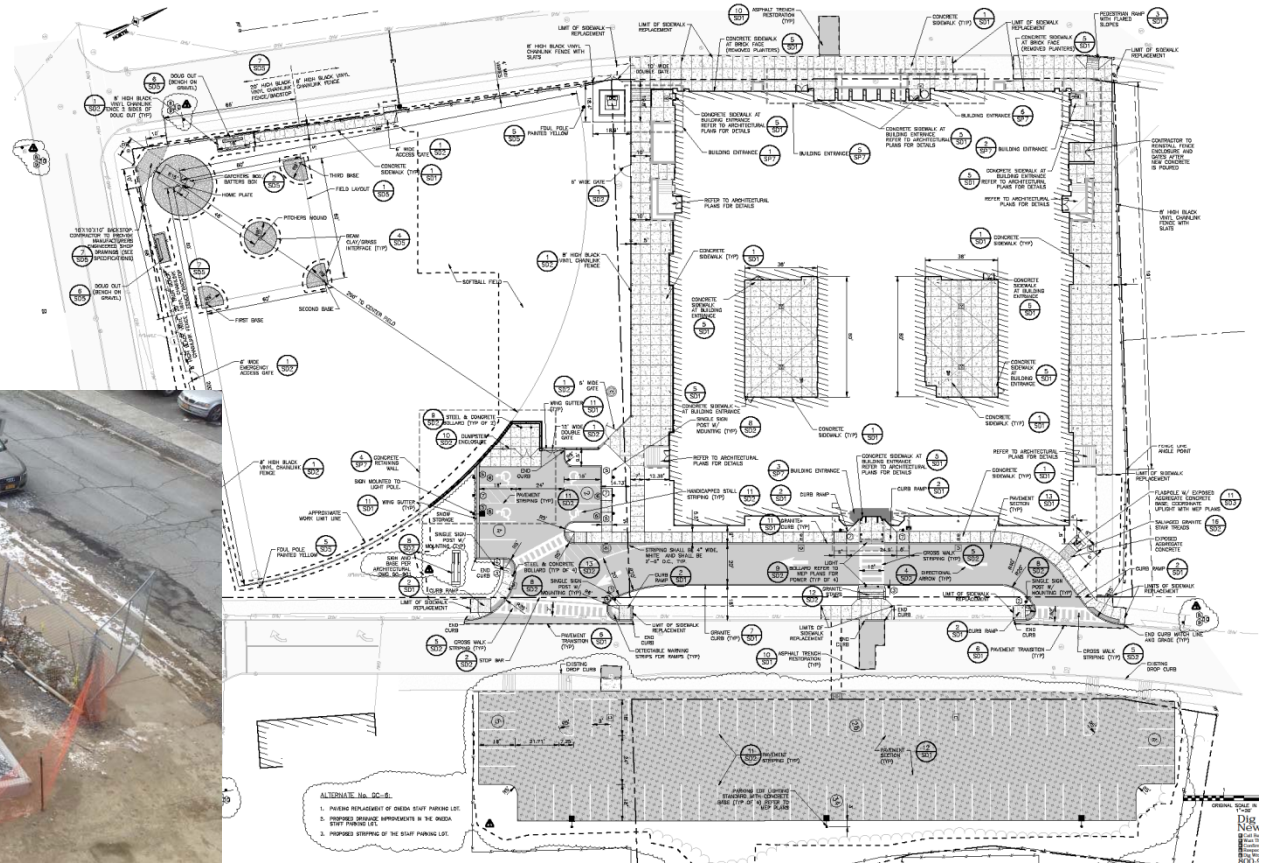


Former Guidance Suite & Library



CAPITAL PROJECT | Group B

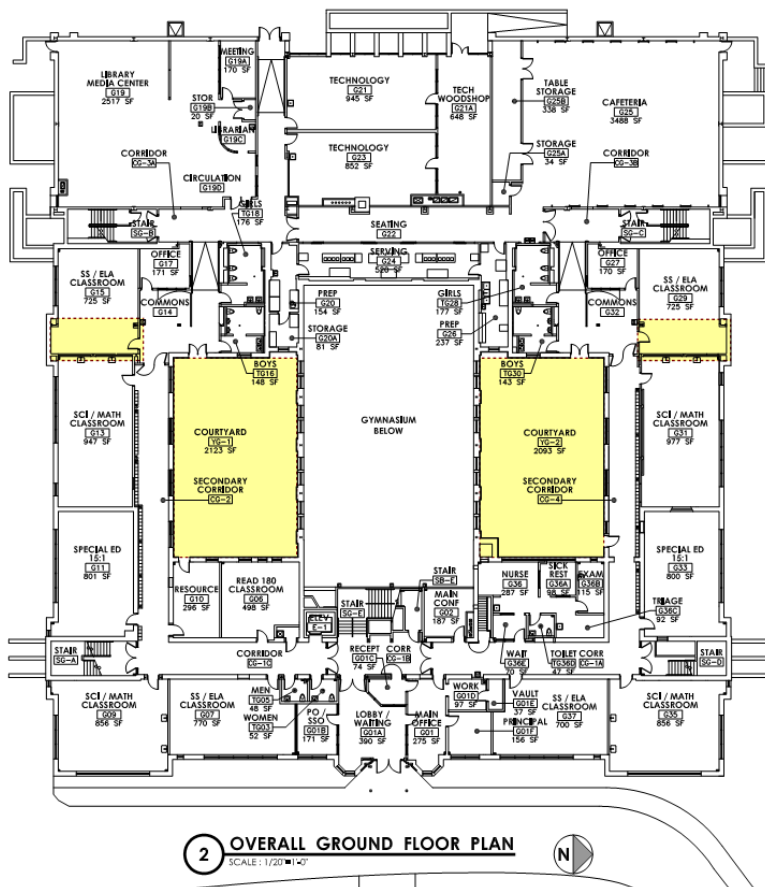
- OMS – Site Plan





CAPITAL PROJECT | Group B

- OMS – Ground Floor Plan



New underground Plumbing & Slab Infill

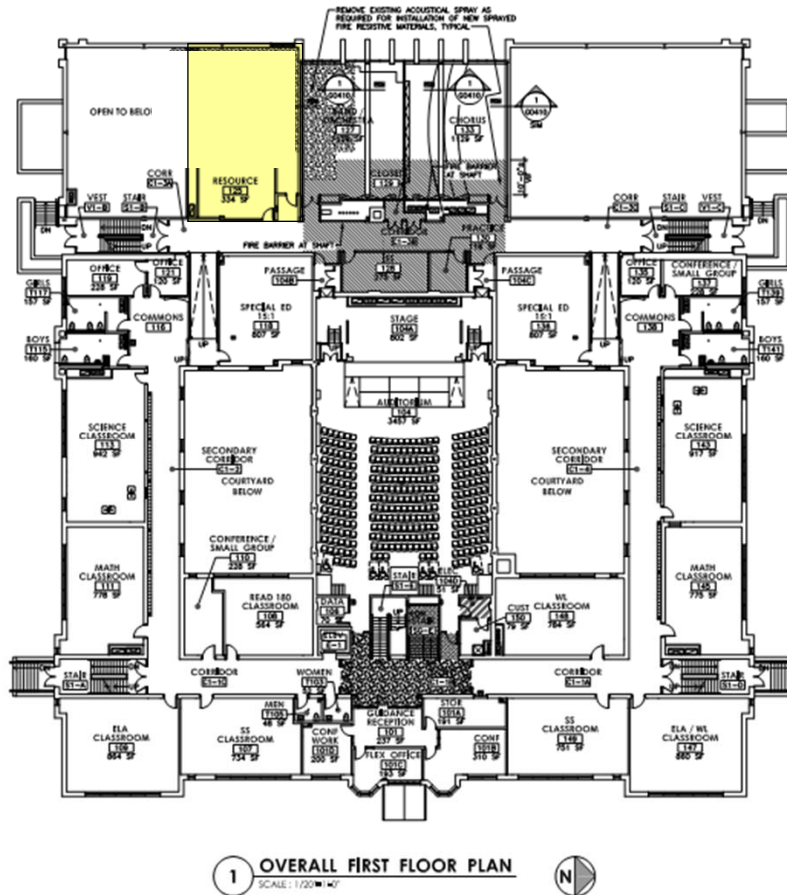


Shoring Reinforcement for Main Stair Infill



CAPITAL PROJECT | Group B

- OMS – First Floor Plan



1st Floor Structural Framing for New Computer Classroom





CAPITAL PROJECT | Group C

- CENTRAL PARK MIDDLE SCHOOL –
- Drawings & Specifications have been submitted to NYSED
 - Architectural review comments received.
 - Awaiting Engineering review.
 - Considerations being made for project bid in mid to late February 2016





CAPITAL PROJECT | Group C

- Van Corlaer ES drawings and specifications have been submitted to NYSED;
 - Awaiting Architectural and Engineering review.
- Howe ES DD drawings and specifications have been submitted to NYSED;
 - SED Review Meeting scheduled for February 16th, 2016.





CAPITAL PROJECT | Group D

- Hometown Health Centers
 - MPMS:
 - Architectural & Engineering Reviews Complete.
 - No recorded approval by SED as of yet.
 - SHS:
 - Approved by SED.



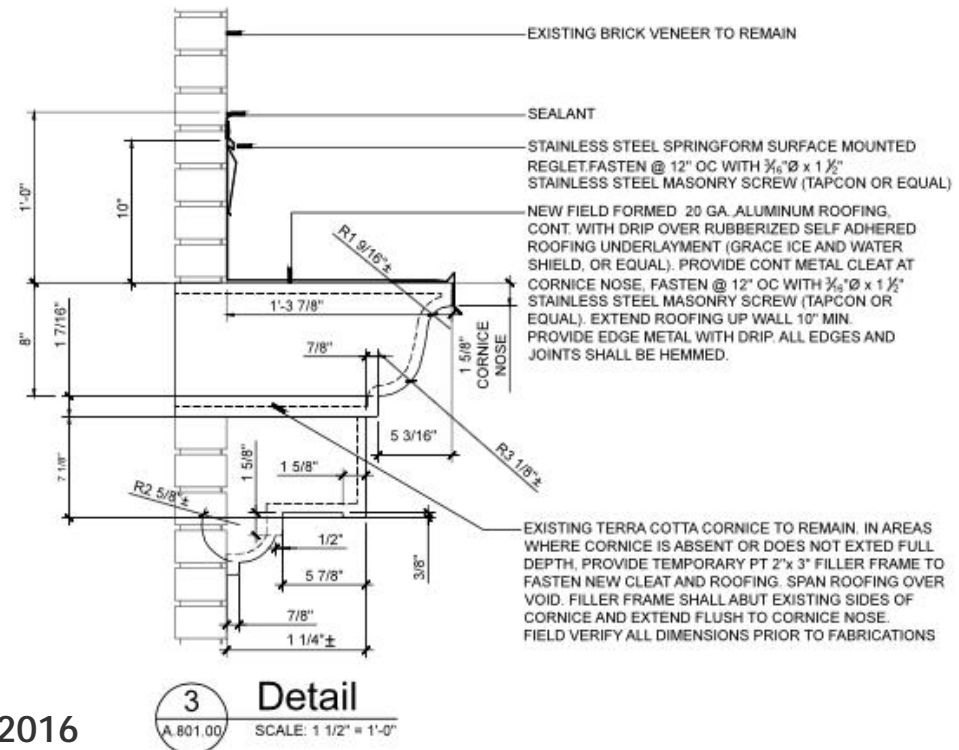


CAPITAL PROJECT | Group D

- CPMS – Exterior Masonry Repair
 - Structural Investigation
 - Failures Identified
 - Temporary Measures Installed
 - Temporary Protection / Permanent Solution



*Potential Bond Referendum – May 2016





CAPITAL PROJECT UPDATE | Next Steps & Milestones

- 16 Feb 2016 SED review - Howe Elementary
- Spring 2016 Anticipate SED review for CPMS and VCES.
- May 2016 Anticipate bidding CPMS, HOWE and VCES Projects.
Potential Bond Referendum for CPMS Exterior Masonry
- August 2016 MPMS Ph. 1 & 2 Turnover
- September 2016 Reopen Oneida Middle School;
Open Mt Pleasant MS & Central Park MS with 6th, 7th & 8th Grades.
- Summer 2017 Construct New bus drop off loop at MPMS.



THANK YOU | Any Questions?

